



CathexisVision 2023

Server Software

QuickStart Guide

Contents

- 1. Introduction 4
 - 1.1 Client and Server Software 4
 - 1.2 CathexisVision Information 4
- 2. Requirements and Restrictions 5
 - 2.1 Supported Operating Systems 5
 - 2.1.1 Not Supported 5
 - 2.1.2 Supported Linux Systems 5
 - 2.1.3 Supported Windows Systems 5
 - 2.2 Windows Update Requirements 6
 - 2.3 Hardware Requirements 6
 - 2.3.1 Hardware Selection Guidelines 6
 - 2.4 Anti-virus Exclusions 7
 - 2.4.1 Folders to Exclude From Anti-virus Scanning in CathexisVision 7
 - 2.4.2 Third-party Anti-virus Real Time Scanning on CathexisVision Client Units 8
 - 2.5 Routing/Port Requirements 8
 - 2.5.1 Ports to Open 8
 - 2.5.2 Remote Support 9
- 3. Installation 10
 - 3.1 Follow the Installation Wizard 10
 - 3.1.1 Failover Installation 11
 - 3.2 Cathexis Windows Performance Wizard 11
 - 3.3 Start CathexisVision 12
 - 3.4 Log In 13
- 4. Licensing 14
 - 4.1 Trial License 14
 - 4.1.1 Recording Review Time 14
 - 4.2 Licensing From a Local Unit 14
 - 4.2.1 Internet Connection: Product Key 14
 - 4.2.2 No Internet Connection: Pack File 15
 - 4.3 Licensing From a Remote Unit 15
 - 4.3.1 Open Configure Servers 16
- 5. The Setup Tab 17
 - 5.1 Open the Setup Tab 17
 - 5.2 General Setup 17

6. Cameras	18
6.1 Adding Cameras	18
6.1.1 Addition Wizard	18
6.1.2 Connection	19
6.1.3 General Settings	19
6.1.4 Add / Edit Video Feeds	20
6.1.5 Right-click Menu (Live, Recording, and Recording Channel Settings)	22
6.1.6 Analytics	23
6.1.7 I / O	23
6.1.8 Serial Ports	24
6.1.9 Camera Edge Review Setup	25
6.1.10 Pan-Tilt-Zoom (PTZ)	25
6.2 Configure Camera	28
6.2.1 Enable Scheduled Recording	29
6.2.2 Enable Motion Recording	29
6.2.3 Enable Analytics Recording	30
6.2.4 Configure Access Rights	31
6.3 Copy / Paste Cameras	31
6.3.1 Paste Mode: Sequential	31
6.3.2 Paste Mode: Discovered	32
6.3.3 Copy / Paste Video Settings	32
6.4 Edit Existing Camera	32
6.4.1 Repeated Options	33
6.4.2 Pre-events Tab	33
6.4.3 Access Tab	33
6.4.4 Privacy Zones	34
6.4.5 Camera Successfully Added	35
6.5 View Camera or Cameras	35
6.5.1 Open	35
6.5.2 Middle-click on a Live Camera	36
6.5.3 Middle-click on a Camera in Review	37
7. Events	38
8. Uninstall	39
9. Conclusion	40

1. Introduction

This quickstart guide provides basic instructions and information to set up a **server** with CathexisVision 2023.1. The objective of this document is to get the software up and running as quickly as possible.

For more detailed information (such as configuring video analytics, failover, etc), please consult the **CathexisVision Setup Manual** or contact Cathexis support at support@cat.co.za

Note: in order to use this document and software, it is assumed that the installer has a basic understanding of the operating system, and is able to do simple administrative tasks. These include adding disks, adding printers, or setting IP addresses.

1.1 Client and Server Software

Server software	The CathexisVision Server software can be installed on a suitably specified hardware server platform for an advanced and comprehensive site video configuration and management system.
Client software	<p>The CathexisVision Client software gives the ability to connect remotely from a Windows OS PC into a CathexisVision server as a client station, without the need for a full server installation.</p> <p>The Client software access to the server is dependent on the login credentials as configured on the server. This can be from Administrator level with full site configuration rights, down to Operator level, with restricted access to site resources.</p>

1.2 CathexisVision Information

A NOTE ON CAMERA CHANNELS

The CathexisVision software packages have **limits on camera channels**. A multi-sensor camera is physically a single device (camera) but it **requires a camera channel for each one of the internal cameras**. The same applies to an encoder: a 16-channel encoder will account for 16 camera channels on the CathexisVision software, even though it is a single device. Even when a camera or device only uses a single IP license, the camera channel limit will still apply.

USEFUL LINKS

To view **tutorial videos** on CathexisVision setup, visit <https://cathexisvideo.com/resources/videos>

Find answers to Cathexis **Frequently Asked Questions**: <https://cathexis.crisp.help/en/?1557129162258>

2. Requirements and Restrictions

Please download **CathesisVision** software to continue with this Setup Manual.

Note: There is a **minimum requirement of 4 Gigabytes of RAM** to run this software.

2.1 Supported Operating Systems

Supported operating systems apply to all contents of CathesisVision software installation, including:

1. CathesisVision software,
2. Map Editor,
3. Archive Viewer.

2.1.1 Not Supported

The following systems are **not** supported:

- Windows XP and earlier
- Windows Vista
- Windows Server 2008
- Windows Server 2012
- Microsoft® Windows® 7 SP1 (supported in CathesisVision 2021 and earlier)
- Microsoft® Windows® 8.1. (supported in CathesisVision 2021 and earlier)
- Linux Fedora 16 (only supported up to CathesisVision 2018)
- NetBSD
- Ubuntu 12.04 (supported in CathesisVision 2020 and earlier)

2.1.2 Supported Linux Systems

- Ubuntu 16.04 LTS Desktop (64-bit)
- Ubuntu 20.04 LTS Desktop (64-bit)

2.1.3 Supported Windows Systems

- Microsoft® Windows® 10
- Microsoft® Windows® Server 2012 R2
- Microsoft® Windows® Server 2016
- Microsoft® Windows® Server 2019
- Microsoft® Windows® 11
- Microsoft® Windows® Server 2022

Note:

- CathesisVision 2021 is the last release to support Windows 32-bit installations.
- CathesisVision 2021 is the last release to support Microsoft® Windows® 7, Windows 8, Windows 8.1 and Windows Server 2008 R2.

2.2 Windows Update Requirements

Some systems require the Universal C Runtime Update. From CathesisVision 2017 onwards, updated Windows runtime libraries are used. This means that the Windows 10 Universal C Runtime update must be run on systems prior to Windows 10 (see list below).

Note: From CathesisVision 2018.3 onwards, Windows Vista and Windows Server 2008 are no longer supported. Thus, the update for 2018.3 does not apply to those systems. Windows Server 2008 R2 is still supported.

This update requirement applies to:

- Windows Server 2012 R2

Windows XP and earlier is not supported. Windows updates can be run, or the specific update KB2999226 may be run. The Windows 10 Universal C Runtime update can be downloaded from: <https://support.microsoft.com/en-us/kb/2999226>

Running the KB2999226 update has prerequisites, and the user may first need to install:

- Windows RT 8.1, Windows 8.1, and Windows Server 2012 R2 update
 - KB2919442 (download from <https://support.microsoft.com/en-us/kb/2919442>).
 - Then KB2919355 (download from <https://www.microsoft.com/en-za/download/details.aspx?id=42327>).

2.3 Hardware Requirements

The **CathesisVision** software architecture is designed to use hardware system components with maximum efficiency. There are many system issues to consider when choosing server hardware. Some examples are:

- Camera resolution
- **Camera bitrates** for recording
- **Camera Frame rates** and resolution for “live” viewing
- **Video Analytics:** is the I.P camera, or the **Cathesis** software used to perform Video analytics
- Whether viewing cameras “live” from the same server on which the user is recording
- Whether “**multicast**” video is being streamed from the camera
- **Storage** methodology (on-board, Network Storage etc.)

2.3.1 Hardware Selection Guidelines

The table below provides guidelines to assist in choosing hardware for the application. The figures in the table were generated using the CathesisVision [Design Tool](#) (visit cathesisvideo.com / **Products / Resources / System Design Tool**).

Note: the following parameters were used to determine these guidelines.

1. These are conservative figures for recording servers only.
2. Live viewing is not included in these numbers.
3. 3MP cameras with a 3MP/24fps recording stream.

4. CIF/12fps analytics stream running Smart VMD. (**Note:** Not Smart AI algorithm-based analytics).
5. External storage on a 1/10 Gbps network.

Note: These guidelines are not exhaustive. For assistance with design, contact a distributor or a Cathesis regional office. Alternatively, navigate to www.cathesisvideo.com and use the [Design Tool](#).

Processor	RAM (GB)	Server Storage throughput Mbps	No. of 3MP cameras per server
i7-7700k 4.20GHz	16	600	152
Xeon E3-1290 V2 3.70GHz	16	500	122
Xeon E5-1680 V4 3.40GHz	32	700	187
Xeon E5-2640 V2 2.40GHz	32	650	164
Xeon E5-2695 V3 2.30GHz	32	900	223
Xeon E5-2699 V3 2.30GHZ	32	1000	253

2.4 Anti-virus Exclusions

If the system is running an anti-virus with active or real-time protection scanning enabled, some CathesisVision folders need to be excluded from anti-virus scanning. This enables CathesisVision to run correctly. The folders which need to be excluded are:

- CathesisVision **Server** installation folder.
- CathesisVision **Client** installation folder.
- Any folders, drivers, and volumes where the database or databases reside.

Note: all folders and paths listed below are default installation folders. If the default folder option was not selected during installation, then locate and exclude installation folder (or folders) from anti-virus scanning.

The sections below indicate the **default installation folders and paths** which must be excluded from scanning.

2.4.1 Folders to Exclude From Anti-virus Scanning in CathesisVision

If the system uses a **global anti-virus** (meaning anti-virus protection is applied globally and not to individual units) and different units in the site might have different installation folders, then exclude all the default installation folders to avoid hassle.

Note: All folders and paths referred to below are default installation folders. If the default folder option was **not** selected during installation, then locate and exclude installation folder or folders from anti-virus scanning.

	Folders to Exclude
CathesisVision Server	c:\program files\Cathesis CathesisVision Suite NVR.
	c:\program files (x86)\Cathesis CathesisVision Suite NVR.
	c:\program files\CathesisVision Server.
	c:\program files (x86)\CathesisVision Server.
CathesisVision Client	c:\dvs.
	c:\program files\Cathesis CathesisVision Suite WRV.
	c:\program files (x86)\Cathesis CathesisVision Suite WRV.
	c:\program files\CathesisVision Client.
	c:\program files (x86)\CathesisVision Client.
Database folders/drives/volumes	Please locate and exclude.

2.4.2 Third-party Anti-virus Real Time Scanning on CathesisVision Client Units

On a CathesisVision Client unit, Windows Defender or other third-party anti-virus real-time scanning component must manually exclude the CathesisVision Server folder from scanning.

2.5 Routing/Port Requirements

The following information refers to the router ports that need to be opened on the network firewall/router/anti-virus. These ports are important in allowing several Cathesis services to run correctly. Please ensure that these ports are also open on the anti-virus (if running one).

2.5.1 Ports to Open

Operational Ports	Protocol	Application	Description
80	TCP	Default CatMobile Access	Port required to allow CatMobile client connection to server.
30010-30100	TCP	CathesisVision Software	Required ports for access to the CathesisVision software and associated configuration, live, and recorded view, etc.
30014	TCP	API (CathesisVision 2016 and previous versions) *	Required port to allow API connection to server when using software versions CathesisVision 2016 and previous. Note: Video also needs to be streamed from the server using TCP port 30010.
33104	TCP	API (CathesisVision 2017 and later versions) *	Required port to allow API connection to server when using software versions CathesisVision 2017 and later. Note: Video also needs to be streamed from the server using RTSP on TCP port 554.

30010-30100	TCP	Carbon GUI	Ports required for Carbon to connect to CathesisVision server, MultiSite server, or Enterprise server.
30010-30100	TCP	CathesisVision Mobile	Ports required to allow CathesisVision Mobile client connection to server.
* For full list of API ports, please consult API help guide or contact support@cat.co.za			

Maintenance Ports	Protocol	Application	Description
22	TCP	Secure Shell (SSH) - Linux	Port required to enable remote access to Linux server using Secure Shell network protocol.
3389	TCP	Remote Desktop – Windows	Port required to enable remote access to Windows server using Remote Desktop application.
N/A	N/A	TeamViewer Access	Application for allowing remote access to a Windows server. No port required.

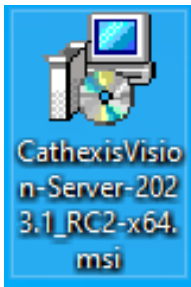
2.5.2 Remote Support

To ensure that remote support is available, please download and install one of the following programs relevant to the operating system.

Linux: Secure Shell (SSH - TCP port 22)

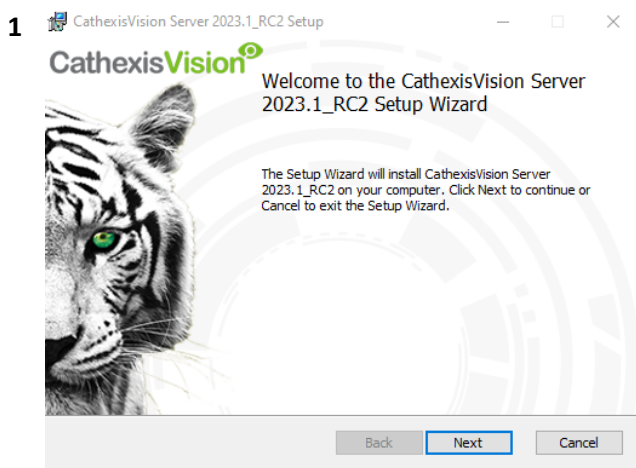
Windows: TeamViewer AnyDesk, or Remote Desktop.

3. Installation

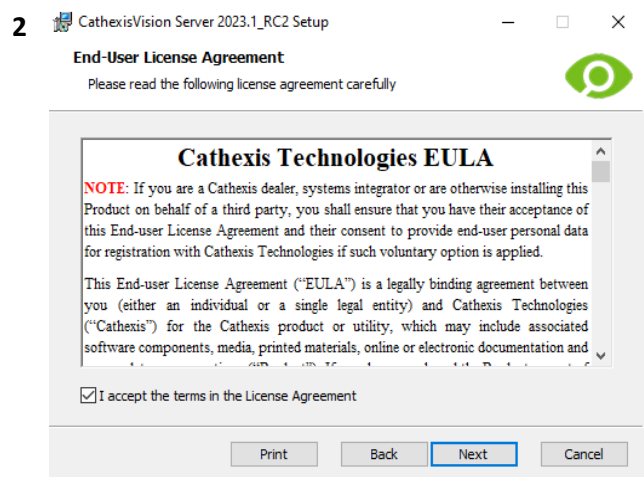


Double-click the installer file to open the **Installation Wizard**.

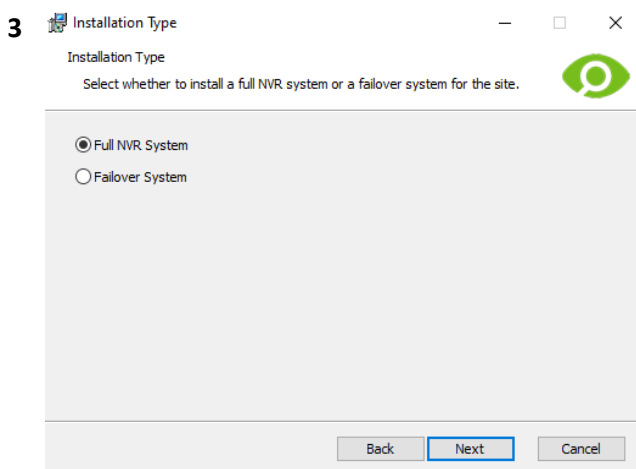
3.1 Follow the Installation Wizard



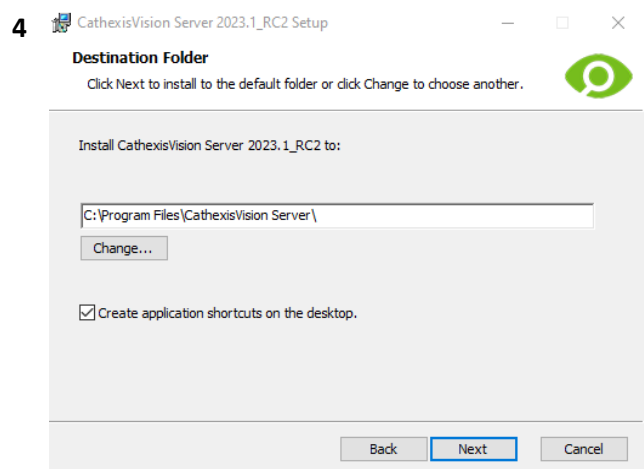
Click **Next**.



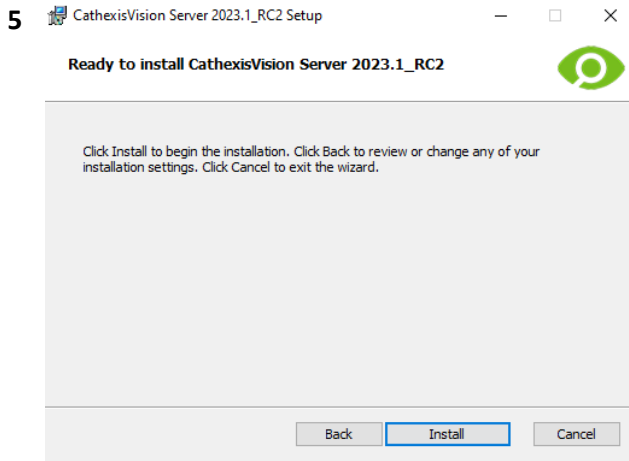
Accept the **End User License Agreement**.



The user will be prompted to choose between a **Full NVR System** and a **Failover System** installation.



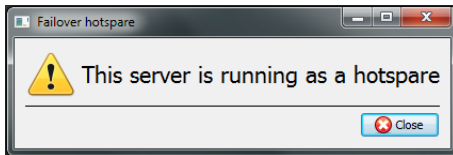
Choose the installation folder (it is best to leave this as it is).



Click **Install**.

When the installation is complete, click **Finish**.

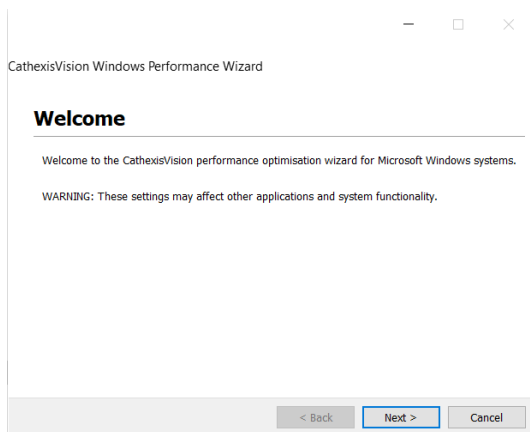
3.1.1 Failover Installation



After a successful Failover installation, attempting to initiate CathesisVision (by double-clicking on the CathesisVision icon) will open the dialogue box shown here on the left.

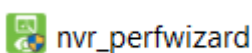
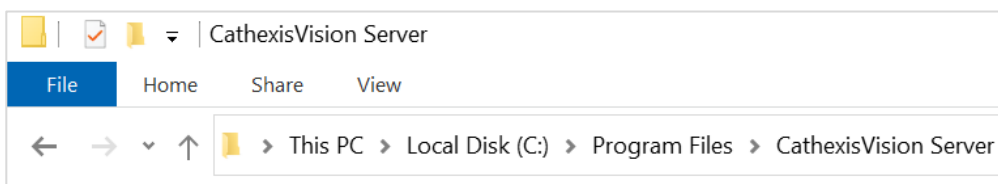
Note: there is further information about Failover in the Setup section of the *CathesisVision Setup Manual*.

3.2 Cathesis Windows Performance Wizard



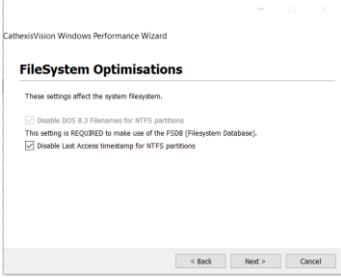
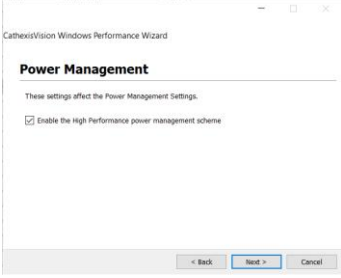
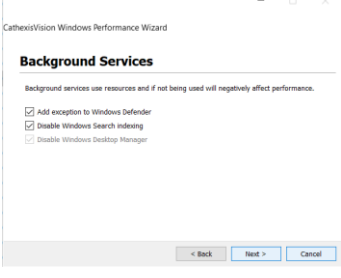

The Cathesis Windows Performance Wizard optimises several Windows system settings for use of CathesisVision software on a Microsoft Windows server. The Performance Wizard is run after a successful installation.

Note: If the Performance Wizard needs to be run again, the operator will need to navigate to the folder in which CathesisVision is installed. The image below shows the default location of the CathesisVision server installation.



In that folder, double-click on the file named **nvr_perfwizard.exe**. This will open the Cathesis Windows Performance Wizard.

The Performance Wizard shows the current state of each setting. It presents the following options:

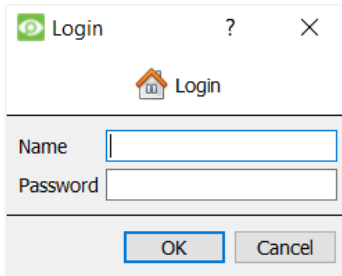
Category	Setting	Explanation	Action
Filesystem Optimisations		Disable Last Access Timestamp for NTFS partitions By default, when a file is accessed, NTFS writes information to record when the file is last accesses. To improve NTFS disk performance, disable the NTFS last-accessed timestamp.	Required
Power Management		Enable the High-Performance power management scheme Adjusts Windows power scheme settings to ensure uninterrupted recording and live viewing.	Recommended
Background Services		Add exceptions to the Windows Defender service This will provide a performance gain for the caching and writing of video to the underlying software and database folder locations. Refer to section 2.4 for more information.	Recommended
		Disable the Windows Search Indexing service This provides a significant performance gain by preventing background indexing of the file system.	Recommended

3.3 Start CathesisVision



This is the user interface where the recording parameters are configured. It allows the user to view live video and review recorded video.

3.4 Log In



The screenshot shows a standard Windows-style dialog box titled "Login". It features a title bar with a green icon, a question mark, and a close button. Below the title bar is a small icon of a house with a person, followed by the text "Login". The dialog contains two input fields: "Name" and "Password". At the bottom, there are two buttons: "OK" and "Cancel".

Default login details

Username: admin

Password: admin

4. Licensing

The mode of licensing depends on whether the license task is being performed on the local unit (the unit being worked on) or a remote unit (a viewing unit on which a copy of the software is installed).

This chapter provides a guide for each situation. For details on the licensing structure of CathesisVision, please consult the *CathesisVision Software Product Description and License Document*, or contact support@cat.co.za.

4.1 Trial License

Once CathesisVision is installed, a trial license is automatically applied to the system. To further license the system, consult the relevant licensing sub-section.

Features of the trial license include:

- Two permanent IP camera licenses.
- Maximum recording review time of two days.
- Standard CathesisVision basic analytics.

To obtain trial licenses that unlock additional features, send a request to support@cat.co.za.

4.1.1 Recording Review Time

With a trial license applied, only two days (48 hours) of recordings may be reviewed at a time. The camera will continue to record to database (as long as there is space, the cameras have the requisite bitrates, etc.). However, review of the recordings will be restricted to two days (48-hours) from the point of review. Apply the relevant licenses to unlock the database and review all recordings for as far back as the database has recorded.

4.2 Licensing From a Local Unit

The following instructions describe the process for licensing the unit that is **currently being worked on**. For information on licensing a **remote unit**, refer to the next section ([Licensing from a Remote Unit](#)).

4.2.1 Internet Connection: Product Key

With access to the internet, and a product key supplied from a vendor, enter the product key.

The system will connect to the online licensing system and complete the process.

4.2.2 No Internet Connection: Pack File

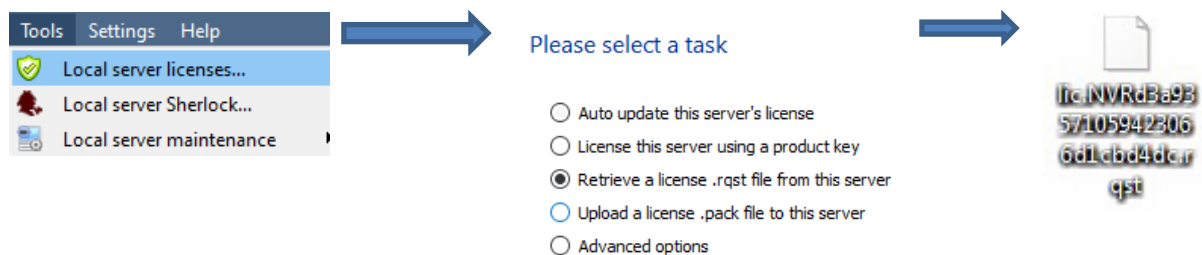
If the unit from which the user is performing the licensing does **not** have internet connection, upload a **.pack** file. A **.pack** file is a file that contains all the licensing information for a unit.

To get a **.pack** file from support@cat.co.za:

1. Save a **.rqst** (request) file from the unit being licensed.
2. Email this file to Cathexis Support, along with the information relevant to the licenses being added to this unit.
3. Cathexis Support will then send a **.pack** file containing the licenses. The licenses can then be uploaded to that unit.

4.2.2.1 License Request File

A **.rqst** file must be retrieved from the unit being licensed. Go to **Tools / Local server licenses...**



Email this **.rqst** file to support@cat.co.za, along with the information relevant to the licenses being added to this unit.

4.2.2.2 Upload .pack File



The site should now be licensed. For further assistance, contact support@cat.co.za.

4.3 Licensing From a Remote Unit

The procedure is different when licencing from a **remote** unit (a viewing unit on which a copy of the software is installed). This is because when the user clicks **Tools / Licensing**, the unit on which the user is currently logged in will be the one that is licensed.

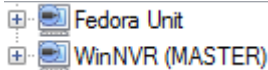
4.3.1 Open Configure Servers

To open **Configure Servers** (in the site that is logged into), follow this path from the menu bar:

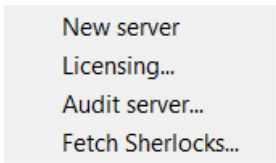
Site / Open Tab / Setup.



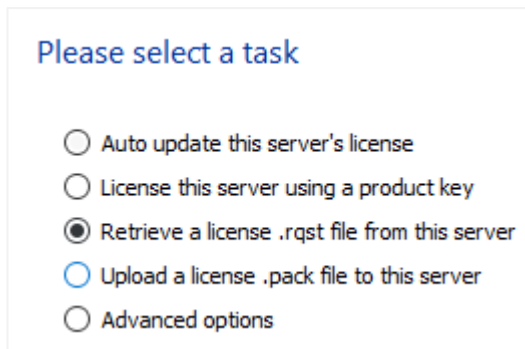
In the **Setup** tab, click on the **Configure Servers** icon.



Once **Configure Servers** is open, right-click on the individual unit to license.



Select **Licensing** from the drop-down menu.



At this point, the licensing procedure is the same as if **Tools — Licensing** had been selected in the GUI of the local machine.

The options shown on the left will appear.

Auto-update if this unit has already been licensed.

Use a **Product Key** if one was provided.

To request a license, follow the procedure detailed in [4.2.2 No internet connection](#) section.

Note: Save the **.rqst** files and upload the **.pack** files to storage media attached to the **unit from which the licensing is being done**, *not* the one being licensed. Always retain the **.rqst** file and the **.pack** file for future licensing support.

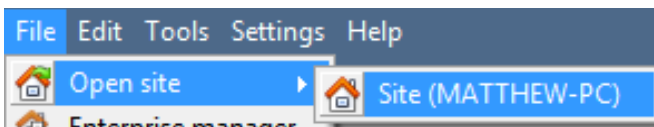
5. The Setup Tab

CathesisVision can run on one individual recording server or on many interlinked servers. Cameras and integrated devices are added to individual servers. Therefore, many of the setups are done on a server-by-server basis. Server-based setups occur in the **Configure Servers** section of the **Setup Tab**.

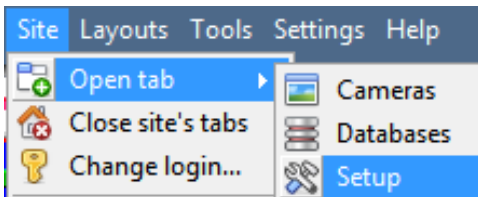
5.1 Open the Setup Tab

Generally, there are two ways of navigating to the **Setup Tab**:

1. File / Open Site / Your_Site_Name



2. Site / Open Tab / Setup



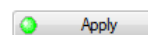
5.2 General Setup

General site setup

Site name	<input type="text" value="SiteName"/>
Offline access level	<input type="text" value="1"/>
Default access level	<input type="text" value="Password required"/>
Site contact	<input type="text" value="No contact"/>
Network	<input type="text" value="312500kb"/> <input type="text" value="1 Gb LAN"/>
Multicast addresses	<input type="text" value="-- default --"/>
<input checked="" type="checkbox"/> Use site passwords <input type="checkbox"/> Hide failed cameras in resource panel	
<input type="button" value="Configure archiving"/>	

In the **General site setup** section, set:

- Site name
- Default access levels
- Site contacts
- Network speed
- Operator archiving profiles.



Once these settings have been chosen, click **Apply**.

6. Cameras

This chapter describes methods for **adding** cameras, the **Camera Editing** options, and the **right-click menu**.

6.1 Adding Cameras

There are two ways to add a camera in **CathesisVision**:

1. The camera **Addition Wizard**. (It also provides the option to add databases, schedules, and events to the system.)
2. The **Copy / Paste** Function.

For either method, enter the **Cameras Panel**, which is located under **Configure Servers**.

File / Your_Site_Name / Open Tab / Setup / Configure Servers / Expand the appropriate **Server / Cameras**

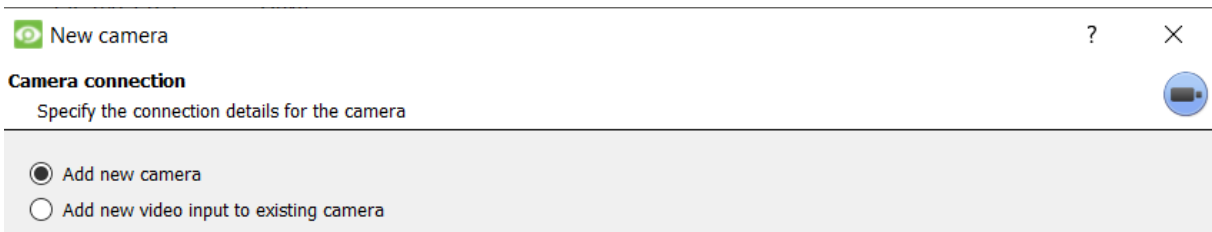
6.1.1 Addition Wizard

The **Camera Addition Wizard** guides the user through all steps needed to add a camera. It also allows for the creation of databases, schedules, and events in the setup process. There are two phases in the **Wizard**:

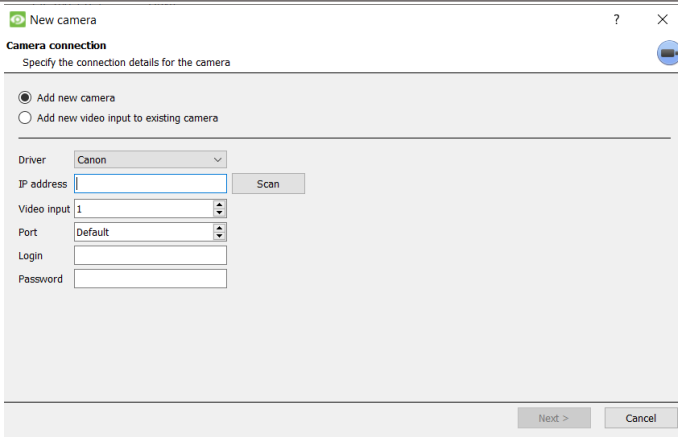
1. The addition of the camera (or video input).
2. Setting up the system to record from that camera (either via a Video Motion Detection (VMD) event, or via a scheduled recording).



To start the camera addition wizard, click on the **New** button at the bottom of the Cameras Panel. The following section guides the user through each step in the wizard.



Note: It is possible to add a new video input to an already existing camera. When a camera already exists on the server, the following option appears in the **New camera** addition window: “Add new video input to existing camera”. This option can be used for configuring cameras with two or more inputs.



Driver: select the relevant driver for the camera.

IP address: set the IP address of the camera.

Scan: scan the network for cameras that have been set up to make themselves available. Click on a camera and it will automatically set its driver and IP address.

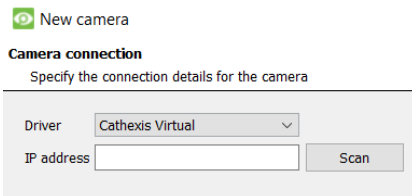
Camera name: the descriptive name given to the camera.

Video input: use if connecting to an encoder that has multiple analogue inputs. If not, leave it on 1.

Port: this has a default setting. However, to connect through a specific port, set it to the port of choice.

Login and password: the camera’s current login details.

6.1.2 Connection

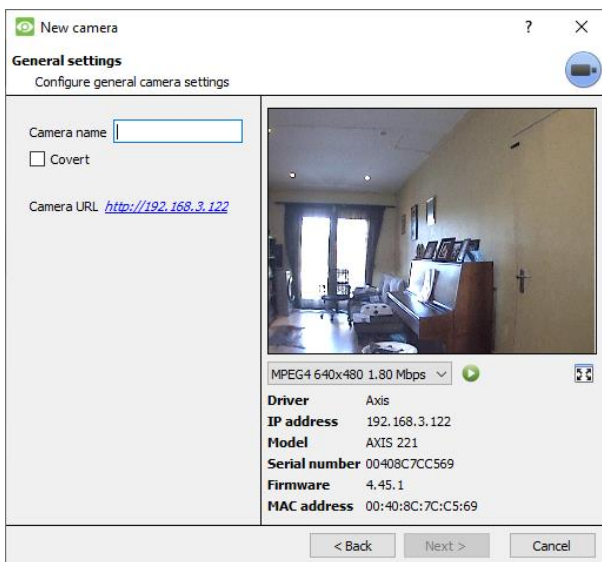


The first step in the Wizard is the Camera Connection. The user can set up the camera’s connection details.

6.1.2.1 Note on Scanning

1. Some cameras do not support automatic location requests and will not be found using Scan.
2. Universal Plug and Play (UPnP) must be enabled on the cameras that support location requests.

6.1.3 General Settings



The table below describes this window.

Note: The image in the preview will not reflect the actual quality of the feed, because it is transcoded when viewed in the Camera Addition Wizard.

Name	Give the camera a descriptive name, to make it easily identifiable.	
Covert	CathesisVision provides the option to create a covert camera. There is a <i>difference</i> between a camera being covert, and a user not having access to it.	
	Covert	Access Level Defined
	Will only be present in the Resources List of an Administrator, or an access level that has been granted access to this camera.	Will still appear in the Resources List of lower login levels, but they will not be able to view the feed.
Camera Information	This will list all the relevant information pertaining to the device. View it underneath the image preview.	
Live Preview		

6.1.4 Add / Edit Video Feeds

To add or edit a video feed, click on one of the available feeds in the list. Then click on the **Edit** button. This will bring up a feed dialogue with the available video feeds and the options that pertain to them.

The two most common IP feeds are **JPEG** and **H.264**.

Settings

General Connection **Video feeds** I/O Serial ports Edge PTZ Preevents Access Privacy z

Format	Res.	Live	Rec. channel	Video analytics	Fps	Bitrate	GOP length
1 MPEG4	VGA (640x480)	Yes	#1 (default)	Yes	30.0	1.80 Mbps	20
2 JPEG	QVGA (320x240)	Yes		No	12.0		1

Feed

Format: MPEG4
 Resolution: 640x480
 Framerate: 30.0
 Bitrate: 1.80 Mbps
 GOP length: 20
 Quality: 100

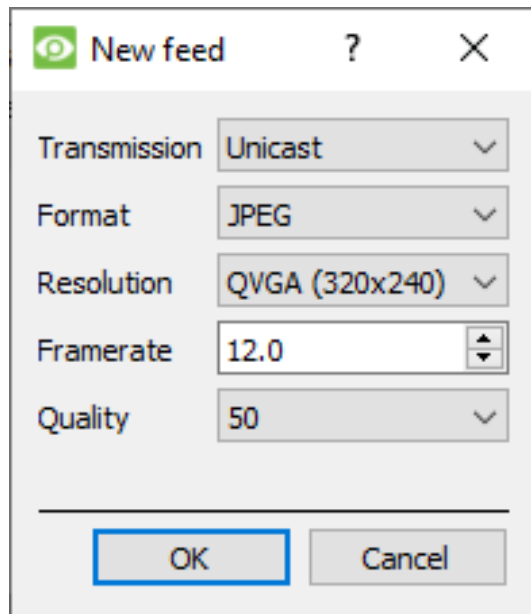
Camera information

Driver: Axis
 IP address: 192.168.3.122
 Model: AXIS 221
 Serial number: 00408C7CC569
 Firmware: 4.45.1
 MAC address: 00:40:8C:7C:C5:69

Connected to camera

OK Cancel

6.1.4.1 JPEG



Transmission: shows the transmission type.

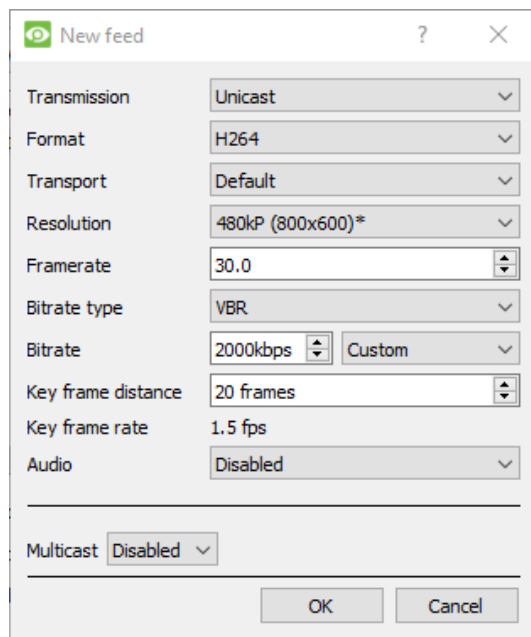
Format: the compression format used by this stream. Click the drop-down menu to choose the one desired.

Resolution: the number of pixels in the image.

Framerate: the number of frames recorded per second.

Quality: how lossy the compression of the image is. At 100, the image will have the best quality. At 50, the image will have the lowest quality.

6.1.4.2 H264



Transmission: the transmission type.

Format: the compression format used by this stream. Click the drop-down menu to choose the one desired.

Resolution: the number of pixels in the image.

Framerate: the number of frames recorded per second.

Bitrate Type: the way the bitrate is handled. A constant bitrate will be more predictable, but will lose more information the more the image changes. Variable bit-rate is less predictable, but will have better images when the picture has more motion.

Bitrate: the amount of information (in bits) that the feed will send per second. (**Quality** defines how lossy the compression of the image is.)

Key Frame Distance: the number of frames between each I-Frame (Key Frame).

Key Frame Rate: demonstrates frame rate.

Audio: this can be disabled or enabled.

Multicast: this can be disabled or enabled.

6.1.4.3 Multicast

Set up **Multicast** on feeds by selecting the relevant option from the feed dialogue. There are three options: **disabled**, **auto**, and **manual**. If **Multicast** is not desired, leave it disabled.

Manual

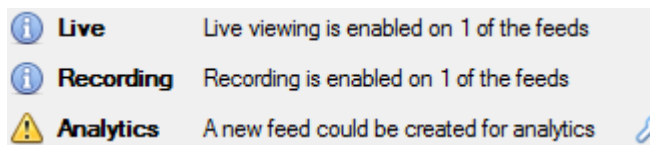
Multicast	Manual
Multicast IP	. . .
Multicast port	0

With **manual** selected, enter the **Multicast IP** and **Multicast Port**.

Auto

On Auto, the Multicast address will be automatically assigned. The core settings for this can be found in the *CathesisVision Setup Manual*.


6.1.4.4 Feed Notifications



This area displays the status of the feeds created: **Recording**, **Live Viewing**, or **Analytics**.

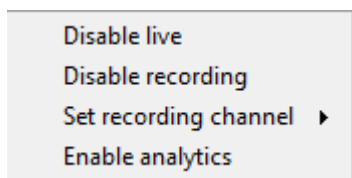
Note: If the user clicks on any of the above icons, detailed information regarding the feed or problem will be displayed.

Automatic Configuration

 If there is a **spanner icon** at the end of the feed notification, this means that there is a potential problem with the feed setup. **Click on this icon** to automatically fix the problem.

6.1.5 Right-click Menu (Live, Recording, and Recording Channel Settings)

After setting up a feed, right-click on it to bring up the menu (shown below). These settings can only be accomplished after the feed is up and running.



Disable live	Disable live viewing of the feed.
Disable recording	Disable recording of the feed.
Set recording channel ▶	Define which channel number will represent this feed.
Enable analytics	Enable video analytics.

6.1.6 Analytics

To enable analytics on a unit:

1. Configure a second feed.
2. Right-click on that feed.
3. Click **Enable Analytics**.

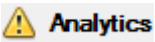
There are a few rules regarding enabling analytics:

If an analytics-enabled channel is not set up here, there will **not** be a prompt to add VMD later in this Wizard. It will also be impossible to add VMD using this feed at a later point.

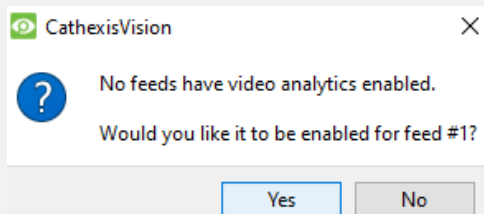
Only feeds that are QVGA resolution (and lower) will provide the option to enable analytics.



A **spanner icon** at the end of the **Analytics feed notification** means that a feed for analytics is **not** enabled. Clicking on the icon to automatically enable a feed for analytics.

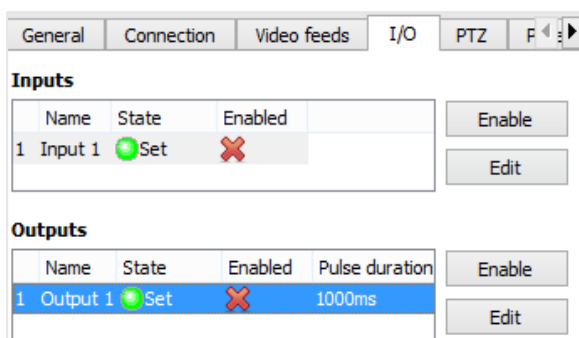


Note: If the user chooses to proceed without enabling analytics, a prompt will appear. The user can also enable video analytics this way.



6.1.7 Input/Output

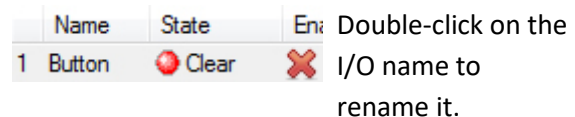
The next step in the addition is the I/O setup. The I/O values represented in the GUI depend on the I/Os provided by the encoder.



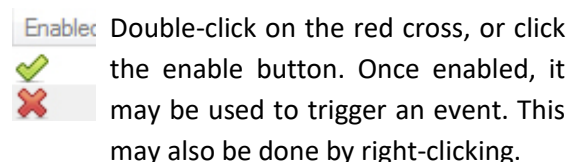
I/O

Inputs are used to trigger an event. **Outputs** are used to give a desired output as a *result* of a triggered event.

Renaming



Enabling



6.1.7.1 Edit an Output

Name: give the output a descriptive name.

Enabled: displays whether the output is disabled or enabled.

Pulse duration: will set the amount of time (in milliseconds) for which the output will pulse (if set to pulse).

Pulse only: if set to Yes, the output will not allow itself to be permanently set.

6.1.7.2 Triggers

Some cameras will have their own event triggers, and encoders will often have I/O options.

Note:

- Double clicking on any of the column values of an I/O will toggle the value. For example, double-clicking on a Clear state will change the state to Set. (These options are also available via the Right-Click menu.)
- Give the I/Os descriptive names, otherwise they will not be identifiable.

6.1.8 Serial Ports

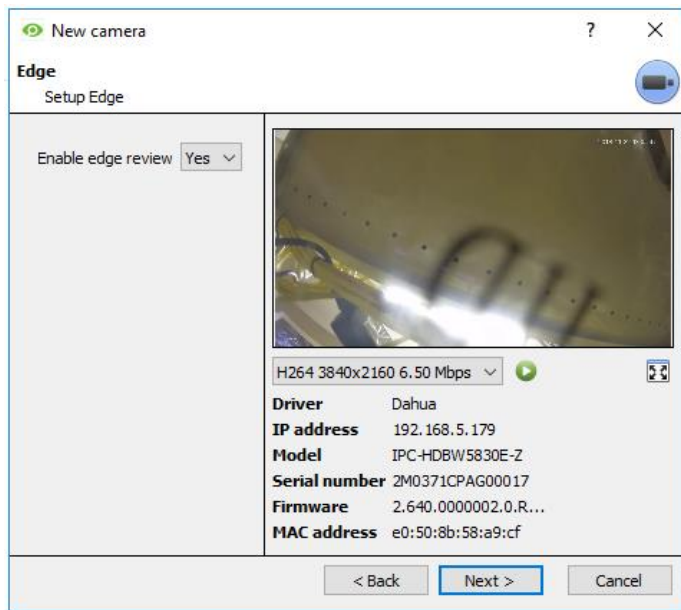
Configure

Highlight the serial port to configure. Then click the **Configure** button.

This provides the option to change the **Baud rate, Data bits, Parity, Stop bits**, and other camera-dependent settings.

Note: This option will only be available if the camera has serial ports.

6.1.9 Camera Edge Review Setup



Cameras that support Edge recordings will have an additional tab in the Camera Wizard. This enables the viewing of the camera's on-board Edge database within CathesisVision.

Select **Yes** from the drop-down menu to enable the database.

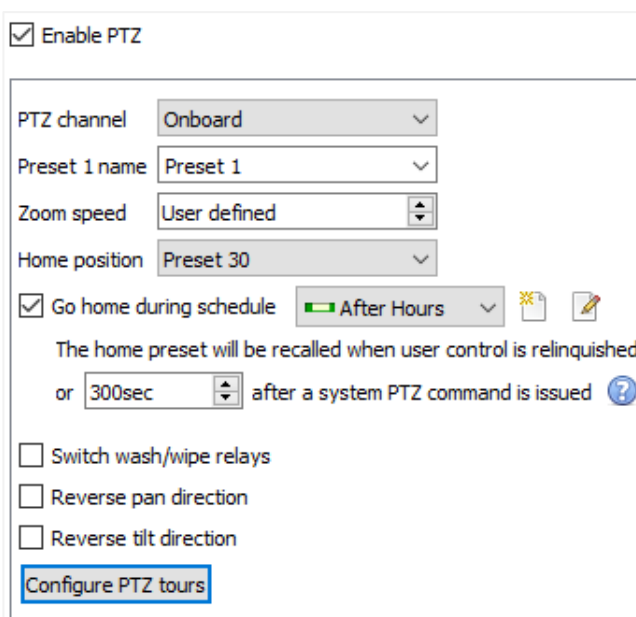
When this is enabled, the camera's Edge database will be available for selection in camera review (as with other CathesisVision system databases).

If this is disabled, the database will not be available for selection.

6.1.10 Pan-Tilt-Zoom (PTZ)

- Enable PTZ** Check this box if a PTZ camera is being added. After this, all the available PTZ options will appear in the Wizard interface.

6.1.10.1 General Settings



PTZ channels can be added in two ways: by selecting Onboard or a Serial Port.

Note: these options vary on a camera-by-camera basis.

Preset Name	Give Presets descriptive names (such as 'front door' etc.)
Zoom Speed	<p>This defines how fast the camera will zoom in when using the PTZ controls.</p> <p>Note: Use the live view panel at the bottom of the Resources Menu, to see if the zoom speed is satisfactory. Test the PTZ zoom in the setup PTZ control, or use the PTZ control option from the resource panel of the camera view.</p>
Home Position	<p>A home position is a pre-set position to which the camera will return, after a set period of inactivity.</p> <p>Automatic Return to Home: Set a schedule, during which the camera will return to its home position. When the schedule is inactive, the camera will remain in the last position that it was left in. If there is no schedule set, the camera will not return automatically to its home position. To have it always return home after a time period, enable the Every Day schedule.</p>
Switch Wash and Wipe Relays	If the Wash and Wipe relays are incorrectly attributed, this will swap them over to the correct order.
Configure PTZ tours	A PTZ tour will run through a sequence of pre-set positions.

6.1.10.2 Configure PTZ Tours

Configure PTZ tours

If the device supports Tours, click on this button to create or edit a PTZ tour. This navigates to the list of tours.

New

Click **New** to create a new tour.

Name and Schedule: give the tour a descriptive name and a schedule (if desired).

Sequence: this is the sequence in which the Presets will run.

Add Preset, Multiple Presets, or a Pattern to the tour

Preset

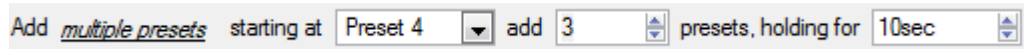
Select the Preset. Set how long the camera should linger at this Preset.

Add **preset** Preset 1 holding for 10sec

Multiple Presets

- Starting at: select the first Preset to add.
- Add: this is the number of Presets being added.

In the example below, Presets 4 to 6 will be added.



6.1.10.3 PTZ Procedures



With a Pan-Tilt-Zoom (PTZ) camera, an operator can manipulate the camera's direction, Zoom, focal distance (Focus) and amount of light (Iris).

The operator can also control pre-configured camera views called "Presets".

When a Live PTZ camera is selected in the CathexisVision interface, a Dome control panel becomes available.

Click the panel's dropdown menu. Select **PTZ**. The software joystick displays.

Note: remember to select or play a live feed.

Using the PTZ Control Panel

Pan Left/Right:



Drag joystick left or right.

Tilt Up/Down:



Drag joystick up or down.

Move Camera Faster: Distance determines speed. Drag joystick out in the required direction.

Move Camera Slower: Distance determines speed. Drag joystick closer in the required direction.

Zoom In / Out: Watch the live camera, while pressing the "Zoom +" and "Zoom -" button.

Focus Further / Closer: Watch the live camera, while pressing the "Focus +" and "Focus -" button.

Go to Preset:

1. Select the Preset from the dropdown. Then click GO.
2. The camera view will change to the Preset.
3. To relinquish manual control of the dome or PTZ camera from the PTZ panel, click Auto.
4. If the system runs remote tours automatically, or switches displays based on events, these automated responses will take over.

Gain Control of Dome / PTZ:

Applies if the system runs remote tours automatically, or switches display based on events.

Either click **manual**, or move the software joystick.

Lighten / Darken Live Camera View: Press the “iris +”, or “iris –” button. The image will lighten or darken.

Define a Preset:

1. Select the Preset number, from the dropdown menu.
2. Use the joystick controls to establish the camera View, Zoom, Focus, and Light (Iris).
3. Click SET.
4. Go to this Preset to check it.

PTZ Priority Control

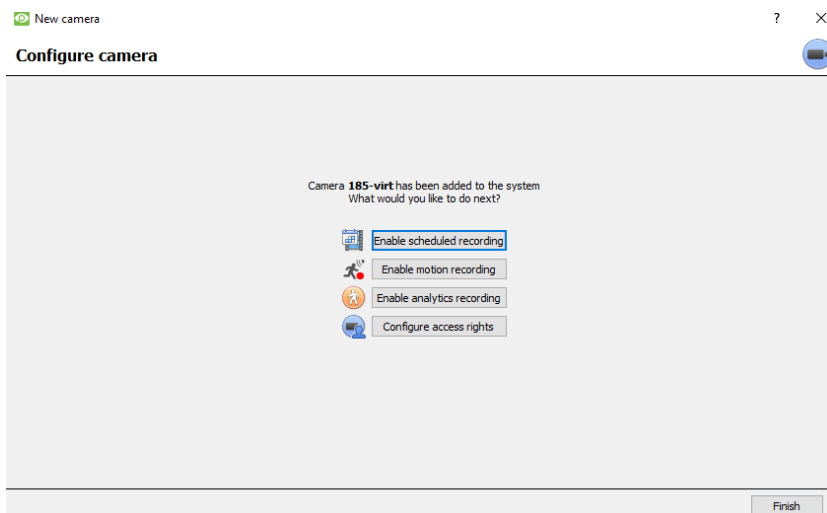
Control of a PTZ camera works on a priority system. This determines who gets control of the camera, if more than one user is attempting to control the camera at the same time.

Administrators get the highest priority. After that, the priority levels run from user level 30, down to user level 1. For example, if a level 10 user and a level 1 user attempt to control the PTZ camera, the level 10 user will get priority control. An administrator would get priority over both.

Note:

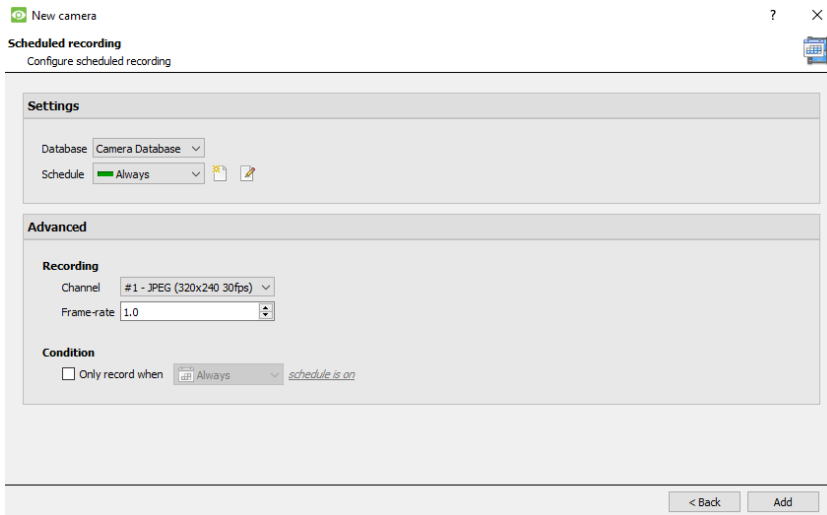
1. If two users of the **same** user level attempt to control the camera, the first user gets priority and the second user will have to wait until the ‘Dome override’ period has elapsed.
2. Manual control of the camera takes priority over event-initiated or auto control of the dome.

6.2 Configure Camera



The operator can now add motion recordings and configure camera access rights.

6.2.1 Enable Scheduled Recording



Scheduled recording can be enabled in the Camera Addition Wizard.

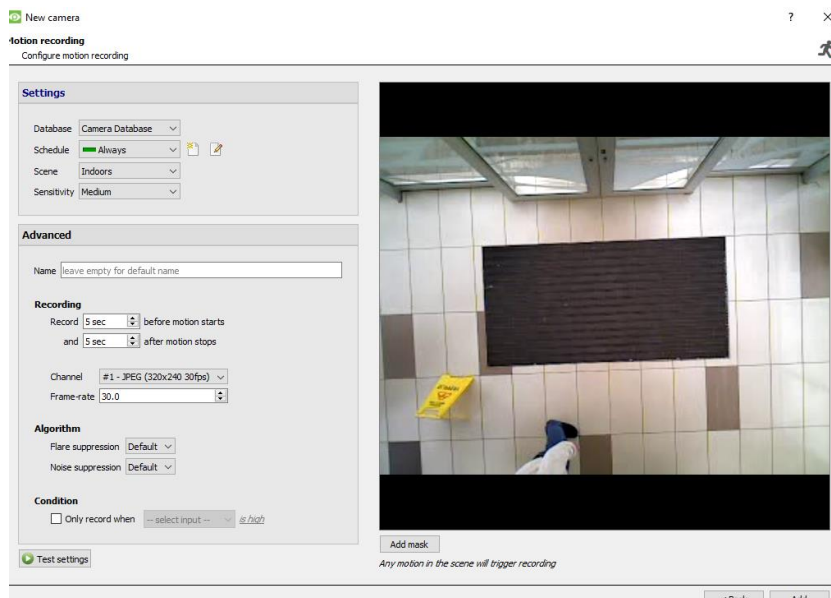
Here, set Database, Schedule, Channel, Framerate and Condition.

6.2.2 Enable Motion Recording

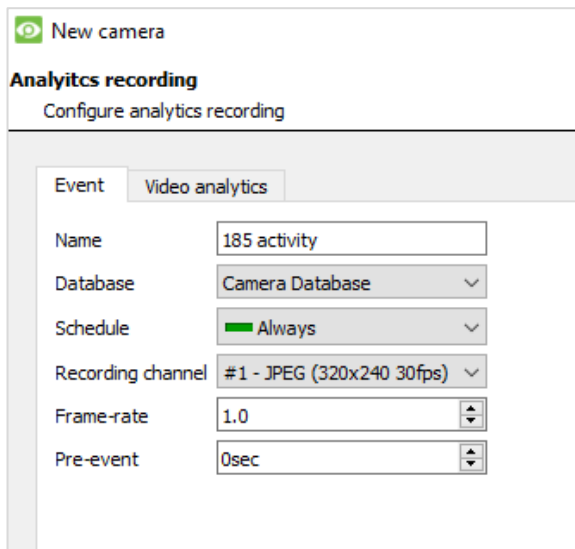
This can be accessed by visiting **Setup / Configure Servers / Expand the Server / Motion Recording**.

Motion recording can be enabled. Here, the user can set Database, Schedule, Scene, Sensitivity, Recording time before and after motion, Channel, Framerate, Flare Suppression, Noise Suppression, and Condition.

The user can also Add mask and Test settings.



6.2.3 Enable Analytics Recording



New camera

Analytics recording
Configure analytics recording

Event Video analytics

Name: 185 activity

Database: Camera Database

Schedule: Always

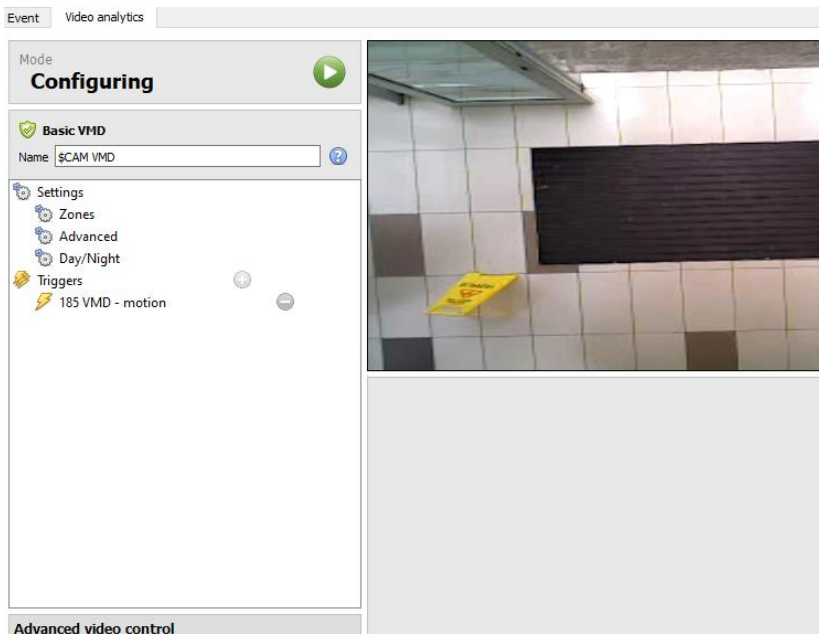
Recording channel: #1 - JPEG (320x240 30fps)

Frame-rate: 1.0

Pre-event: 0sec

When configuring analytics, under the **Event** tab, set:

Name, Database, Schedule, Recording channel, Frame-rate, and Pre-event.



Event Video analytics

Mode **Configuring**

Basic VMD

Name: SCAM VMD

Settings

- Zones
- Advanced
- Day/Night
- Triggers
 - 185 VMD - motion

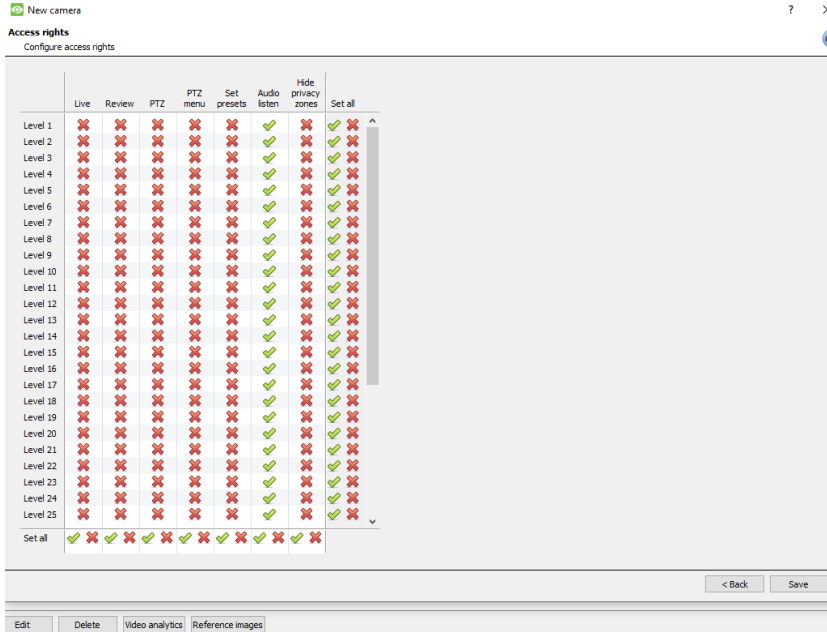
Advanced video control

When configuring analytics under the **Event** tab, set Zones, Advanced options, Day/Night settings, and Triggers.

Advanced video control may also be used.

6.2.4 Configure Access Rights

Click the **Configure access rights** button to configure relevant access rights.



6.3 Copy / Paste Cameras

CathexisVision offers an easy solution for adding more than one camera that operates on the same driver. Copy and paste new cameras, using the addition information of one previously added camera.

To paste new cameras:

Copy Right-click on the previously added camera. Click **Copy**.

Paste new... The right-click anywhere in the Cameras Panel. Click **Paste new...**

6.3.1 Paste Mode: Sequential

The paste mode sequential window provides the option to add the new cameras as a direct copy of the camera that was copied.

Select paste mode Sequential

Number of cameras to add

Start IP address

Total channels on encoder

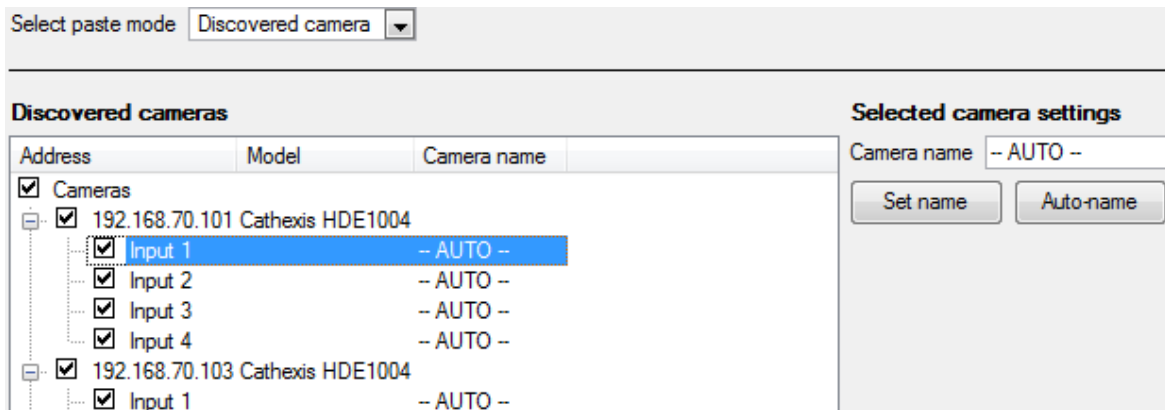
Start input

Start IP Address: this determines the IP address of the first new camera being added. The IP addresses will be incremented from here. (Make sure no IP addresses in this range have been used.)

Total channels on encoder: this must be the full number of camera channels available on this encoder.

Start Input: this is the actual physical channel to which the first camera is added.

6.3.2 Paste Mode: Discovered



Note: This will copy the video settings from the copied camera onto the discovered cameras selected.

6.3.3 Copy / Paste Video Settings

Copy	If several cameras with the same drivers have already been selected, and the user wishes to transfer the video settings of each camera across, right-click. Select Copy .
Paste video settings	Then right-click on the camera to which the video settings will be added. Select Paste video settings .

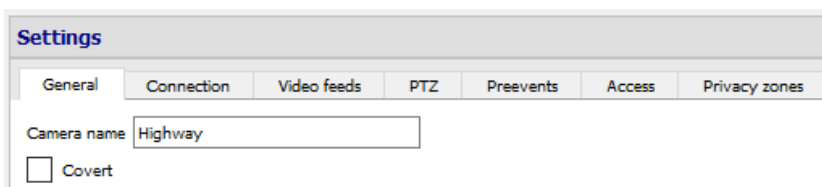
Note:

This step relates to the Video Feed settings. This will not add Video Motion Detection analytics.

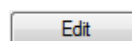
Only copy onto cameras that have the same driver as the camera that has been copied.

6.4 Edit Existing Camera

Note: If any changes are made to the setup of a camera that is currently multicasting, restart the streams. This entails removing and reselecting the cameras in the Cameras tab, after the settings are saved.



Edit a camera that has already been added, by returning to **Setup Tab / Configure Servers / Cameras**.



Select a camera. Click **Edit**.

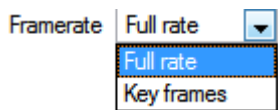
This will bring up an interface with tabs containing the camera's details which can be edited.

6.4.1 Repeated Options

The camera setup options of **General**, **Connection**, **Video Feeds**, **I/O**, and **PTZ** are all dealt with above. The Pre-events, Access, and Privacy Zones tabs will be dealt with below.

Note: The **Wizard** goes through the process of setting up a **Database**, **Scheduled Recordings**, and **Video Motion Algorithm** triggered recordings. These appear as individual panels in **Configure Servers**, and not as options within the **Edit** tabs.

6.4.2 Pre-events Tab



Pre-events were set up under the **Activity Recording** section of the **Wizard**.



The number of pre-events cannot be defined here. However, the frame rate of the pre-events may be defined in this tab.

Note: JPEG is recorded in Key Frames, so there will only be the option of *Frames per Second* when setting the pre-events on a MJPEG stream.

6.4.3 Access Tab

Under the **Access** tab, set up which user access levels have control of the different facets of the available cameras.

	Live	Review	PTZ	PTZ menu	Set presets	Audio listen	Hide privacy zones	Set all
Level 1	<input checked="" type="checkbox"/>	<input checked="" type="checkbox"/>	<input checked="" type="checkbox"/>	<input checked="" type="checkbox"/>	<input checked="" type="checkbox"/>	<input checked="" type="checkbox"/>	<input checked="" type="checkbox"/>	<input checked="" type="checkbox"/>
Level 2	<input checked="" type="checkbox"/>	<input checked="" type="checkbox"/>	<input checked="" type="checkbox"/>	<input checked="" type="checkbox"/>	<input checked="" type="checkbox"/>	<input checked="" type="checkbox"/>	<input checked="" type="checkbox"/>	<input checked="" type="checkbox"/>
Level 3	<input checked="" type="checkbox"/>	<input checked="" type="checkbox"/>	<input checked="" type="checkbox"/>	<input checked="" type="checkbox"/>	<input checked="" type="checkbox"/>	<input checked="" type="checkbox"/>	<input checked="" type="checkbox"/>	<input checked="" type="checkbox"/>

Live	This controls which Access Levels can view the camera's live feed.
Review	This controls which Access Levels can review recorded footage from this camera.
PTZ	This controls which Access Levels can control PTZ movement.
PTZ Menu	This controls which Access Levels have the ability to change the PTZ menu.
Set Presets	This controls which Access Levels can change PTZ Preset positions.
Audio Listen	This controls which Access levels can listen to the audio from the onboard microphone.
Hide privacy zones	This controls which Access Levels can hide privacy zones on the camera image.
Set All	<div style="display: flex; justify-content: space-between;"> <div style="text-align: center;">   </div> <div> <p>Selecting the tick will give this level access to all settings.</p> <p>Selecting the cross will give this level access to no settings.</p> </div> </div>

6.4.3.1 Important Note on Access Rights

1. All access levels on this unit are managed in the Access Rights Panel of the server.
(Site / Open Tab / Setup / Configure Servers / Expand the Server / Access Rights)
2. Access rights pertain to the access levels assigned to specific users. If a user is given level 1 access, and this camera is only assigned to other levels, that user will not see this camera.
(Users are managed in Site / Open Tab / Setup / Users).
3. Non-admin users may be given the right to configure other non-admin users. See the main **CathexisVision Setup Manual** for more information.

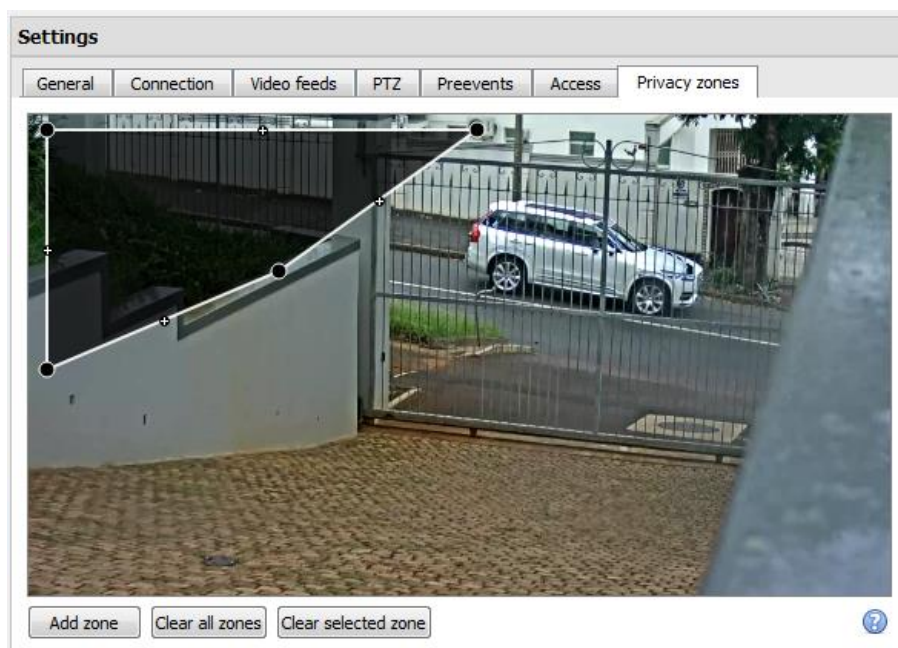
6.4.3.1 Audio Listen Access Right

The table below describes situations in which the Audio Listen access rights settings configured by the user do and do not apply.

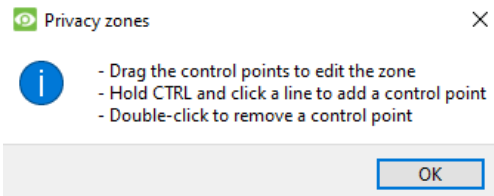
Audio Listen access right settings do apply to:	Audio Listen access right settings do not apply to:
Live viewing.	Independent audio channels.
Reviewing from the camera tab.	Archived video.
Reviewing from the database tab (both video and integration databases).	Connecting to a 2016.2 server using a 2015 / 2016.1 viewer.
Viewing video when handling an alarm in the Alarm Management Gateway.	Connecting to a 2016.1 server using a 2016.2 viewer.

Note: When listening to reviewed audio, only a single audio channel will now play.

6.4.4 Privacy Zones



Using privacy zones, certain areas of the camera image can be blocked from view. They can be hidden (removed) by operators who have been granted access rights to do so. Otherwise, privacy zones can be set to blacken out the sensitive information on the camera image, and will reflect in snapshots, recordings, and review.

Add zone	Add a new privacy zone to the camera image.
Clear all zones	Clear all privacy zones from the camera image.
Clear selected zone	Clear only the selected zone from the camera image.
?	<p>Click this to show instructions on defining the shape of a privacy zone:</p> 

6.4.5 Camera Successfully Added

Roadshow Demo MSTR - Cameras		
Camera	Address	Driver
A) Road Office Driveway	192.168.7.21	Generic Encoder
B) Front Parking Lot(axis)	192.168.3.97	Generic Encoder
C) Front Door Entrance	192.168.3.187	Generic Encoder
D) Lower Veranda	192.168.5.238	Generic Encoder
E) Lower Veranda Passage	192.168.5.250	Generic Encoder
F) Driveway Perimeter	192.168.5.50	Generic Encoder
G) Back Parking Lot 1	192.168.3.105	Generic Encoder
H) Back Parking Lot 2 (dahua)	192.168.7.163	Generic Encoder
I) Back Parking Lot 3	192.168.7.107	Generic Encoder
J) Dining Area	192.168.7.57	Generic Encoder
K) Inside Kitchen	192.168.7.169	Legacy Rtsp
L) Inside Foyer	192.168.1.65	Generic Encoder
M) Reception Area	192.168.3.197	Generic Encoder
N) Upstairs Balcony	192.168.5.253	Generic Encoder
fence line cat escape	009.0.0.0	Virtual

New Edit Delete Video analytics Reference images

The camera has now been set up.

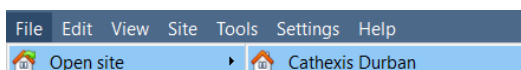
It will start recording as configured.

From this screen, another camera can be added, or the camera that has just been set up can be edited.

6.5 View Camera or Cameras

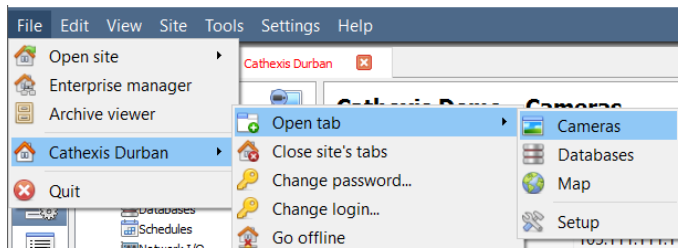
6.5.1 Open

6.5.1.1 Open Site



File / Open Site / Your_Site_Name.

6.5.1.2 Open the Cameras Tab

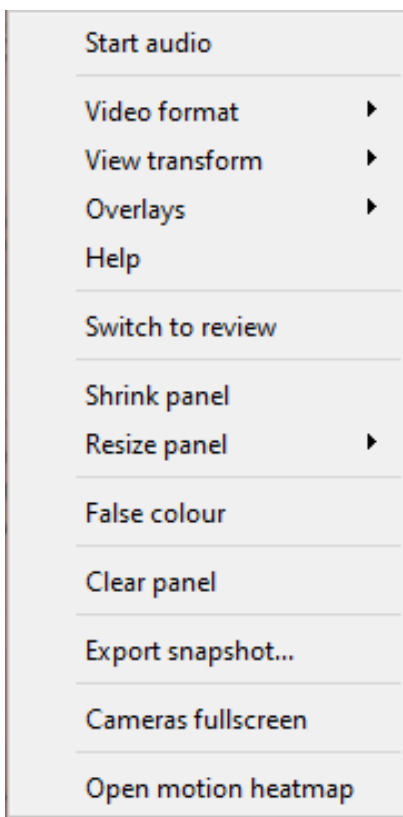


File / Your_Site_Name / Open Tab / Cameras.

Double-click on a camera in the **Resources** panel to start viewing it.

6.5.2 Middle-click on a Live Camera

Middle-click on a live camera to change aspects of how the camera appears in a panel.



Start audio: starts audio.

Video format: allows the user to select which of the camera's video streams (format / resolution) they wish to view.

View transform: allows transforming images for cameras with special lenses. (For example, 360-degree cameras.)

Overlays: allows viewing the different analytics algorithms that have been applied to this camera's feed, live in the Cameras Tab.

Help: a pop-up help window on Digital Zoom, and PTZ Control within this panel will appear.

Switch to review: allows switching back and forth between live and review footage.

Shrink panel: reduces the size of the camera panel.

Resize panel: gives more resizing options.

False colour: changes the colour of the image to false colour.

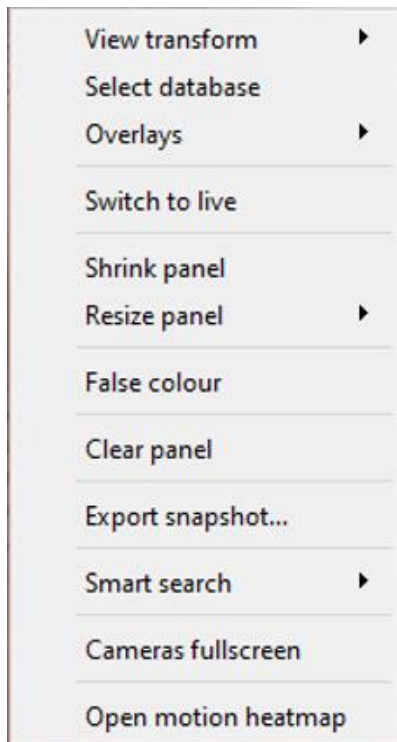
Clear panel: removes the camera or cameras from the currently selected panel or panels.

Export Snapshot...: opens a window to print snapshot, save to folder, copy to system clipboard, or copy to CathesisVision clipboard. The user can also choose include the camera name and time of snapshot in the overlays.

Cameras fullscreen: fills the entire screen with the Cameras Panel, creating a Video Wall. The same procedure will exit fullscreen mode.

Open Motion Heatmap: opens motion heatmap.

6.5.3 Middle-click on a Camera in Review



View transform: allows transforming images for cameras with special lenses. (For example, 360-degree cameras.)

Select database: if multiple databases are set up, use this option to set a camera to record to a certain database.

Switch to live: allows switching back and forth between live and review footage.

Shrink panel: reduces the size of the camera panel.

Resize panel: gives more resizing options.

False colour: changes the colour of the image to false colour.

Clear panel: removes the camera or cameras from the currently selected panel or panels.

Export snapshot...: opens a window to print snapshot, save to folder, copy to system clipboard, or copy to CathesisVision clipboard. The user can also choose to include the camera name and time of snapshot in the overlays.

Smart search: use the snap-search feature to search the database for snapshots similar to the current image.

Cameras fullscreen: fills the entire screen with the Cameras Panel, creating a Video Wall. The same procedure will exit fullscreen mode.

Open motion heatmap: opens motion heatmap.

7. Events

Servers		Roadshow Demo MSTR - Events			
Name	Triggers	Actions	Databases	Schedule	
Lockdown Section A Event	Trigger template (ⓘ)	Call AMG (alarm previews), Record trigger cameras	camDB	Always	
Lockdown Section B Event	Trigger template (ⓘ)	Record trigger cameras, Call AMG (alarm previews)	camDB	Always	
Lockdown Section C Event	Trigger template (ⓘ)	Record trigger cameras, Call AMG (alarm previews)	camDB	Always	

Events are located under **Site / Open Tab / Setup / Configure Servers / Events**



When creating Video Motion Detection (VMD), it will immediately be added as an event.

This VMD setup can also be used in other events.

From the Events panel, the user can edit current events, create new events, or delete events that are no longer desired.

Double-click or edit an event to adjust the **Schedule, Resources, Triggers, and Actions** as required.

New Event

New event

General | Triggers | Actions | Resources

Name:

Description:

Schedule:

Priority:

OK Cancel

- A trigger sets off an event. There can be more than one trigger per event. (For example, VMD from two cameras will cause the same action.)
- Actions are defined as the actions taken by the system as a result of the trigger.

Note: the “Resources” section refers to the system’s ability to switch the display on a Client Viewing PC to a relevant camera’s stream, as a result of an action. This does not affect which cameras will be recorded.

8. Uninstall

To uninstall, follow the process that is native to the operating system on which CathesisVision was installed.

9. Conclusion

Note: this is a quick guide to the CathesisVision server software. For more information on CathesisVision, consult the *CathesisVision Setup Manual* (<http://cathesisvideo.com/>).

For support, contact support@cat.co.za